

Managing a Network of Networks

at the University of Illinois Chicago

Ruthwik Reddy, UIC TS • KAdam White, Human Made



Intro to UIC RED

red.uic.edu

- The WordPress platform for creating and managing UIC websites
- UIC branded theme framework for a consistent look across department websites
- Includes a variety of page layouts and content components that are designed to create responsive, accessible and usable websites without extensive knowledge of website development
- Allows departments to host sub-unit websites nested within departmental sites

614

production sites,

300 dev and archive sites in a single installation

Red Multisite



UIC WordPress

Start here to learn →



Tutorial



What's Available in RED



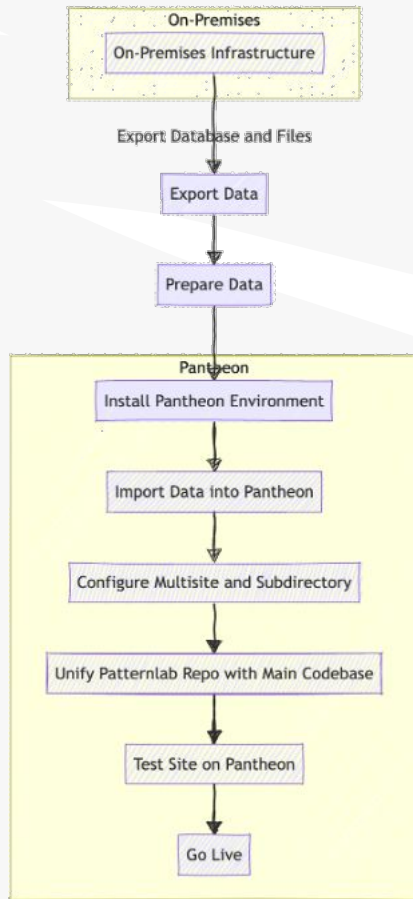
Requirements



Accessibility

A large, stylized blue hand graphic is positioned in the background, with fingers spread. The hand is a darker shade of blue than the background, creating a subtle watermark effect. It is centered horizontally and vertically, with the palm facing forward.

**Big Network,
Small Team**



Migration to Pantheon

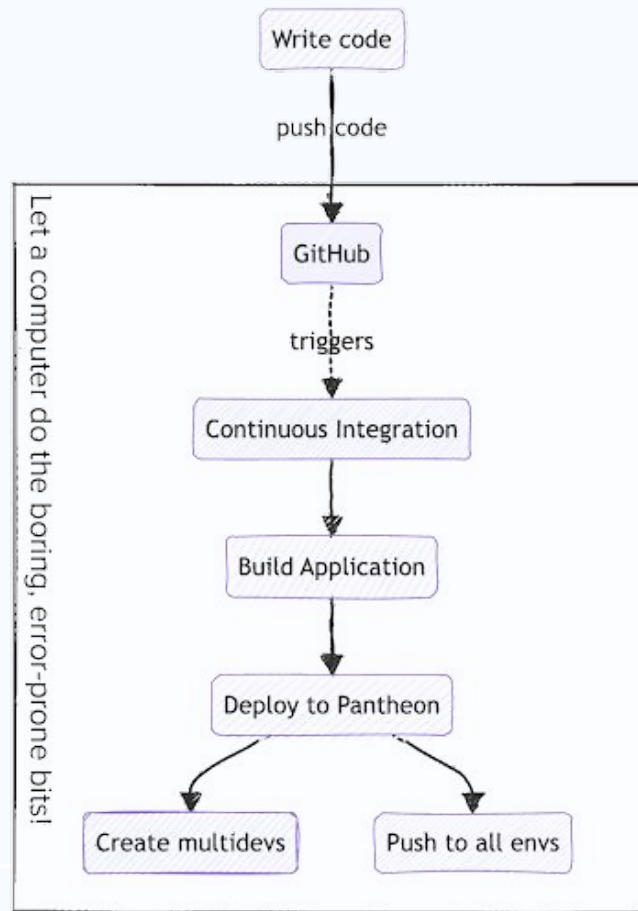
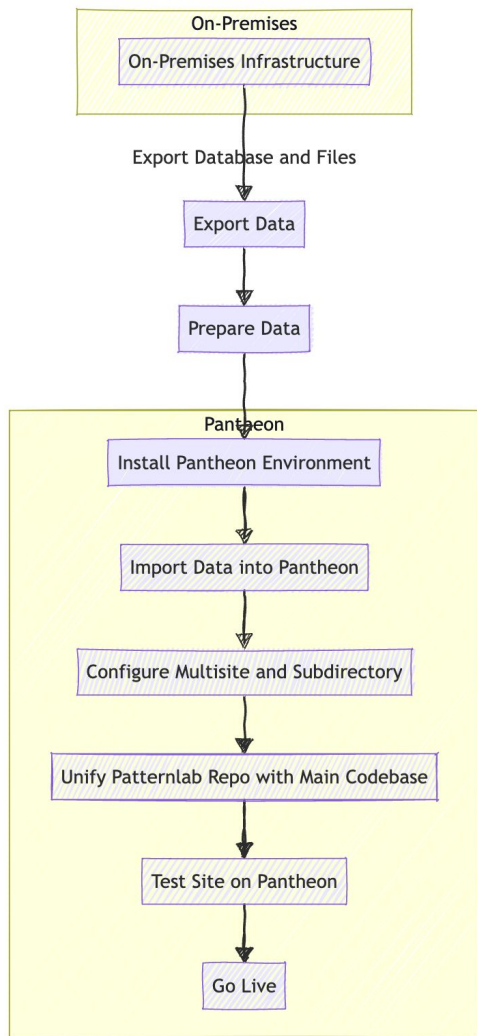
Issues (on-prem hosting):

- Infrastructure update and Maintenance
- Non Scalable
- Security
- Logging and Monitoring.

Collaboration with Human Made

Challenges on Pantheon:

- Performance optimization
- Support for subdirectory multisite structure and subdomain multisite networks
- Ensuring single source code management
- Security
- MultiDev setup





**Prepare the
codebase**

getcomposer.org
packagist.org ▪ wpackagist.org



```
composer require wpackagist-plugin/query-monitor  
composer update wpackagist-plugin/safe-svg
```

```
wp-content/  
  mu-plugins/  
    first-party-plugin/  
    third-party-plugin/ # Composer-installed, .gitignore'd  
    autoloader.php      # Versioned file which loads mu-plugins  
  plugins/  
    first-party-plugin/  
    third-party-plugin/ # Composer-installed, .gitignore'd  
  themes/  
    atom/  
  uploads/               # .gitignore'd entirely  
wordpress/              # Composer-installed, .gitignore'd  
vendor/                  # Dev-time dependencies (PHPCS, etcetera), .gitignore'd  
index.php                # Versioned in Git  
wp-config.php            # Can be locally committed OR .gitignore'd
```

```
"repositories": {
  "wpackagist": {
    "type": "composer",
    "url": "https://wpackagist.org",
    "only": [ "wpackagist-plugin/*", "wpackagist-theme/*" ]
  }
},
"require": {
  "johnpbloch/wordpress": "~6.6.0",
  "wpackagist-plugin/web-stories": "^1.35.0",
  "wpackagist-plugin/wordpress-seo": "^23.0"
},
"extra": {
  "installer-paths": {
    "wp-content/plugins/{$name}/": [ "type:wordpress-plugin" ]
  },
  "wordpress-install-dir": "wp"
},
```

Dependabot



Conversation 0



Commits 1



Checks 2



Files changed 1



dependabot bot commented on behalf of **github** on May 15



Bumps wpengine/advanced-custom-fields-pro from 6.2.6.1 to 6.2.10.



compatibility unknown

Dependabot will resolve any conflicts with this PR as long as you don't alter it yourself. You can also trigger a rebase manually by commenting `@dependabot rebase` .

► Dependabot commands and options



Merge repositories



**Those who cannot remember the
past are condemned to repeat it...**

How do you maintain `git` history when
merging unrelated codebases?

brew install git-filter-repo

```
% git checkout you@host.com:your/theme-repo.git  
% cd theme-repo  
% git filter-repo --to-subdirectory-filter \  
wp-content/themes/ourtheme
```

before

```
[16:09:02] % tree | head -n4
```

```
.
├── LICENSE
├── bin
└── └── install-wp-tests.sh
```

```
[16:09:04] % git log --oneline --graph
```

```
* 656a7e3 tools(ci): Add a benign comment
* 36a5a70 tools(build): install jQuery
* 2cf191c chore: Fix syntax warning about
* ed287c7 chore: Adding some global licenses
* d51e9fd chore: moved wp-sri plugin url
* 684b193 chore: repatriate semicolons
* a42fcb1 feat: ignore emergency alert
```

after

```
[16:10:11] % tree | head -n7
```

```
.
└── wp-content
    └── themes
        └── uic-red
            ├── LICENSE
            ├── bin
            └── └── install-wp-tests.sh
```

```
[16:10:27] % git log --oneline --graph
```

```
* 905fead tools(ci): Add a benign comment
* 2e261de tools(build): install jQuery
* f311960 chore: Fix syntax warning about
* 7b4b349 chore: Adding some global licenses
```

git merge

--allow-unrelated-histories

```
% cd new-monorepo  
% git remote add theme ../theme-dir/.git  
% git fetch theme  
% git merge --allow-unrelated-histories theme/main
```

Codebases: Merged

 main ▾



Go to file



 Code ▾



ruthwiklingam

Merge pull request [#130](#) from uic-ts/ci-cd



94496ed · last month



.github

testing deploy events for branch equals ...

last month



patternlab

Fixing whitespace lint error

2 months ago



web

Merge branch 'pantheon' into sync-pant...

last month



.browserslistrc

Refine browserslist to streamline output ...

6 months ago



.editorconfig

Move build files to project root

6 months ago



**Synchronize
changes**

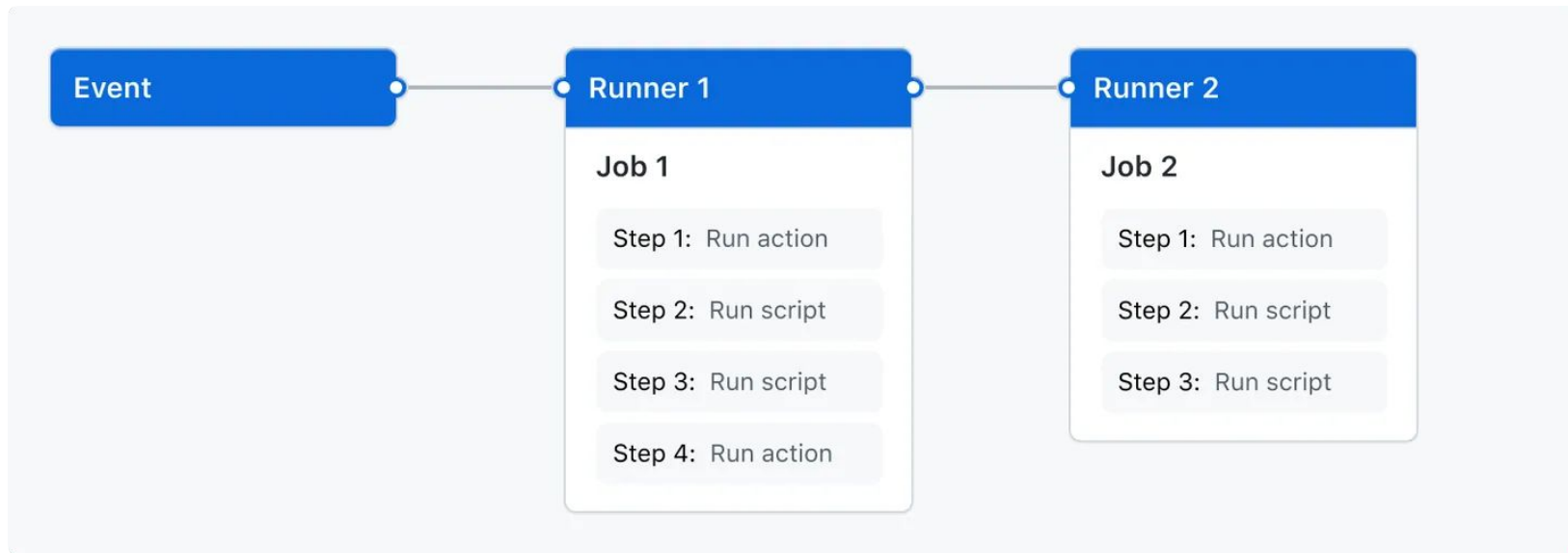
Resources

- github.com/newren/git-filter-repo
- [Blog post: Merging git repos with git filter-repo](#)
- [GitHub documentation on removing sensitive information](#) (using filter-repo)
- [Interactive Rebasing tutorial on Bitbucket](#)
- [Blog post: Using Dependabot with WordPress](#)

The background is a solid red color with several large, overlapping, semi-transparent red brush strokes or splatters. These strokes are of varying sizes and orientations, creating a dynamic, textured effect behind the text.

Continuous Integration

GitHub Actions



.github/workflows/ci.yml

```
name: Build & Deploy
```

```
on:
```

```
  workflow_dispatch:
```

```
  workflow_call:
```

```
  push:
```

```
    branches:
```

```
      - main
```

```
  pull_request:
```

```
    # Only run on a given PR if relevant source files have changed.
```

```
    paths:
```

```
      - '**.php'
```

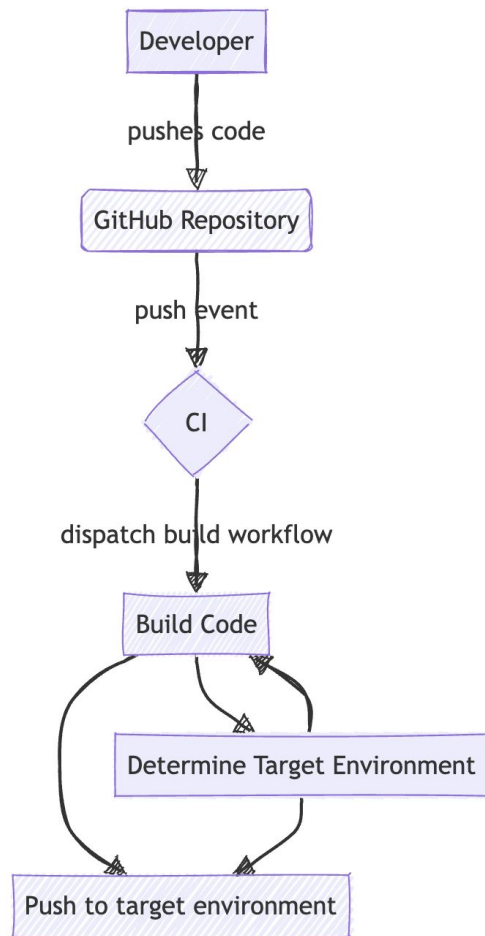
```
      - 'etc'
```

```
jobs:
```

```
  build:
```

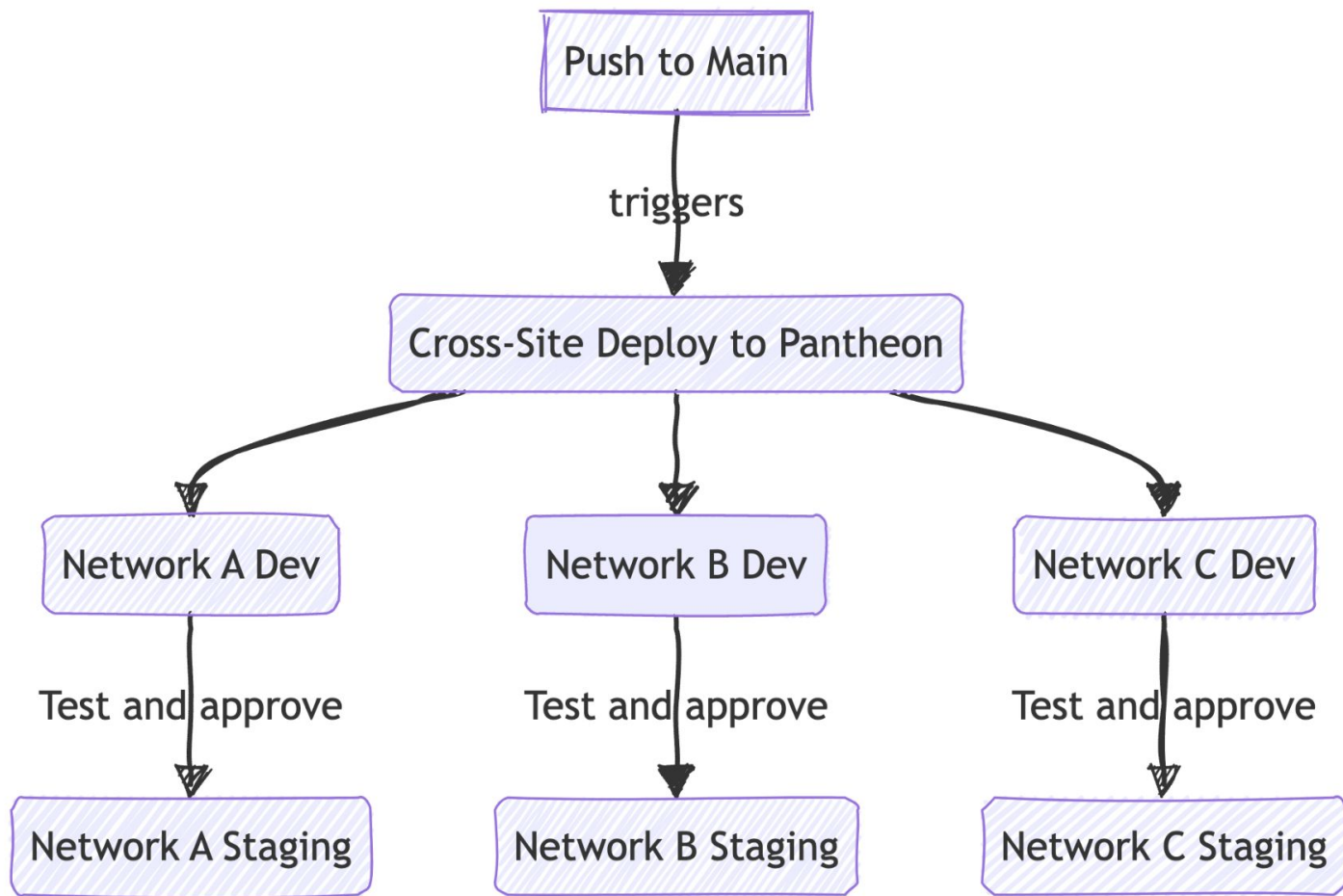
```
    uses: ../.github/workflows/build.yml
```

```
    secrets: inherit
```

build.yml

1. Checkout codebase
2. Check whether workflow should run
3. Set up PHP (Composer dependencies)
4. Set up Node (Build dependencies)
5. Build project
6. Commit built files to target branch
7. Push updated deploy branch



Choose Deploy Target

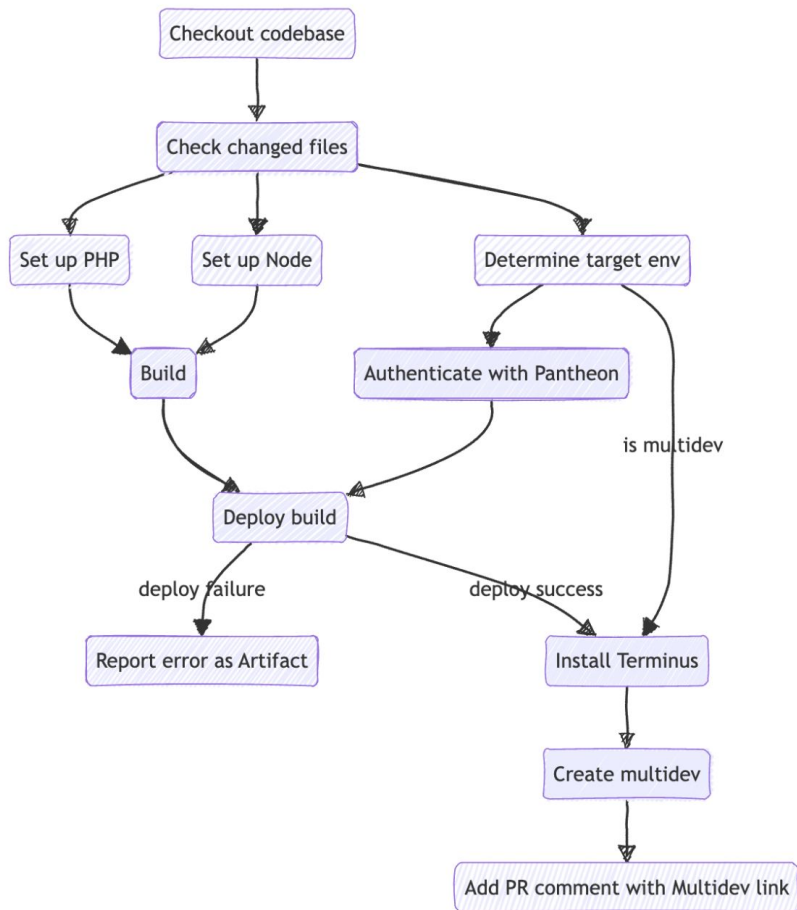
```
- name: Identify target branches and Pantheon environment context
  id: environment
  uses: ../github/actions/environment
  with:
    PANTHEON_PROJECT_IDS: ${ vars.PANTHEON_PROJECT_IDS }
```

Main or Multidev?

```
- name: Identify target branch names and multidev context
  id: branch_name
  shell: bash
  run: |
    SOURCE_BRANCH="${GITHUB_HEAD_REF:-${GITHUB_REF#refs/heads/}}"
    echo "source_branch=$SOURCE_BRANCH" >> $GITHUB_OUTPUT
    DEPLOY_BRANCH=$(bash .github/actions/environment/determine-target-branch.sh "$SOURCE_BRANCH")
    echo "deploy_branch=$DEPLOY_BRANCH" >> $GITHUB_OUTPUT
```

```
outputs:
  source_branch:
    value: ${{ steps.branch_name.outputs.source_branch }}
    description: Name of source branch for build (either pushed branch or PR base branch).
  deploy_branch:
    value: ${{ steps.branch_name.outputs.deploy_branch }}
    description: Name of branch to deploy to, inferred from source_branch.
  is_multidev:
    value: ${{ steps.branch_name.outputs.is_multidev }}
    description: Whether a multidev should be created for this branch.
  pantheon_project_ids:
    value: ${{ steps.environment.outputs.pantheon_project_ids }}
    description: The specific Pantheon instance used as our main deploy target.
```

gist.github.com/kadamwhite/1c049512abcd8db99023e920771316b8



Full workflow

1. **Checkout & build**
2. **Determine target environment**
 - a. Multidev or Main?
3. **Deploy to Pantheon env(s)**
4. **Use terminus to create multidev, if necessary**
5. **Report status as PR comment**

Resources

- [Blog Post: Getting started with CI and WordPress](#)
- [Understanding GitHub Actions](#)
- [GitHub Actions Documentation](#)
- [Pantheon terminus CLI documentation](#)
- [“Introducing GH Actions” on CSS Tricks](#)
(slightly outdated but still good)



Looking forward



Further CI opportunities

Code style consistency
Security “sniffs”

Outcomes

Outcomes

- Simplified setup for devs
- Retained Pantheon multidev capabilities for review and testing
- Allows for single codebase deployed to multiple installations
- Introduce insert tests, security, and accessibility scanning into build process

**Thank
You!**



Human Made